

# Installation instructions

## Set # 5.4107 / 5.4109



1131 VIA CALLEJON, SAN CLEMENTE, CA 92673

### Removal

Spray all nuts to be removed generously with your favorite rust buster.

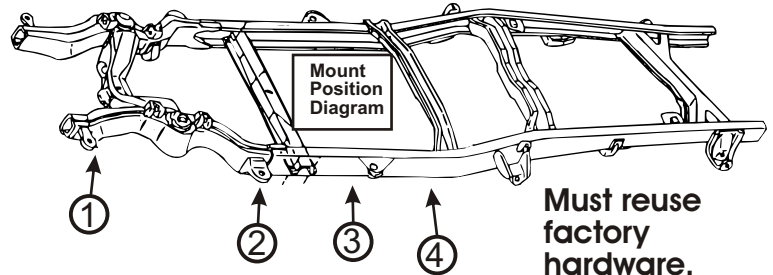
**Note:** When disassembling, note the quantity and positions of any shims that may have been inserted for body alignment. These shims will have to be reused to insure proper body alignment.

**Remember:** Only raise body high enough to remove & replace mounts. Always watch the fan shroud for sufficient clearance when raising the body. When jacking the body use a long enough 2X4 or 4X4 for maximum support. Never put jack directly on body panels.

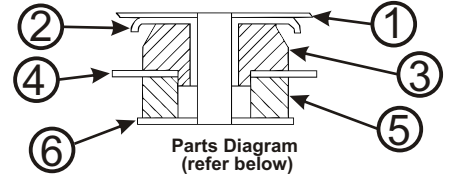
Install mounts one side at a time with bolts on other side loosened only.

**Retorque to factory specs.**

© 2007 Energy Suspension. All rights reserved.  
May not be reproduced, in any form, or by any means, without the written consent of Energy Suspension.



**Must Remove Shifter Bracket And Park Brake Clamp From Frame Before Lifting Body**



Position # 1-3

1. Body
2. Factory washer with Sleeve
3. 4149
4. Frame
5. 4148
6. Factory washer

Position # 4  
Club Cab Only

1. Body
2. Factory washer with Sleeve
3. 4149
4. Frame
5. 4148
6. Factory washer

# Installation instructions

## Set # 5.4107 / 5.4109



1131 VIA CALLEJON, SAN CLEMENTE, CA 92673

### Removal

Spray all nuts to be removed generously with your favorite rust buster.

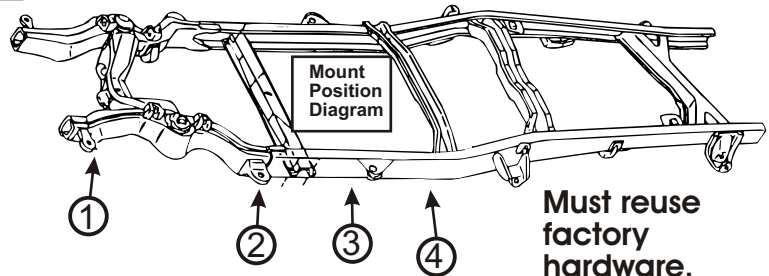
**Note:** When disassembling, note the quantity and positions of any shims that may have been inserted for body alignment. These shims will have to be reused to insure proper body alignment.

**Remember:** Only raise body high enough to remove & replace mounts. Always watch the fan shroud for sufficient clearance when raising the body. When jacking the body use a long enough 2X4 or 4X4 for maximum support. Never put jack directly on body panels.

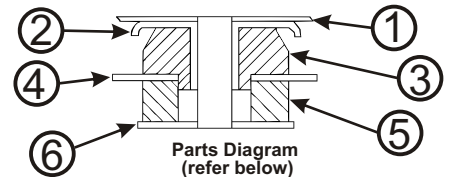
Install mounts one side at a time with bolts on other side loosened only.

**Retorque to factory specs.**

© 2007 Energy Suspension. All rights reserved.  
May not be reproduced, in any form, or by any means, without the written consent of Energy Suspension.



**Must Remove Shifter Bracket And Park Brake Clamp From Frame Before Lifting Body**



Position # 1-3

1. Body
2. Factory washer with Sleeve
3. 4149
4. Frame
5. 4148
6. Factory washer

Position # 4  
Club Cab Only

1. Body
2. Factory washer with Sleeve
3. 4149
4. Frame
5. 4148
6. Factory washer

17251

12/MAR/07 BRH

17251

12/MAR/07 BRH