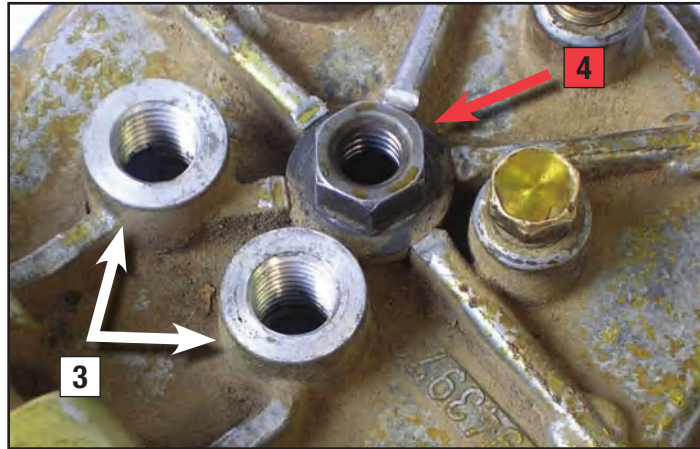


- 1) Drain the fuel filter canister.
- 2) Unplug the fuel heater and water-in-fuel sensor.
- 3) Remove the (2) banjo bolts (19mm or 3/4") Be careful not to lose the (4) banjo bolt gaskets.



- 4) Loosen the 9/16" nut that secures the fuel filter canister to the filter head.
- 5) Remove the (2) fuel filter head bolts (10mm).
- 6) When the fuel filter canister is removed from the engine compartment, you can now remove the fuel filter canister and the fuel filter.



- 7) Look at the bottom side of the fuel filter head. You will see (3) T25 torx head screws that hold the heating element in place that will need to be removed.



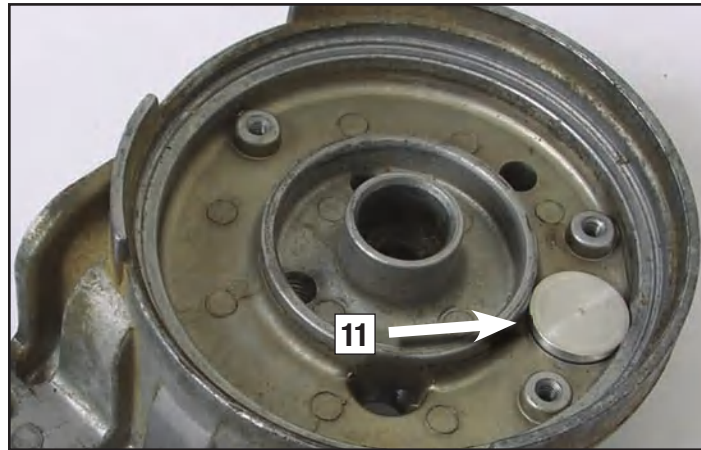
If you need more assistance, we are only a phone call away.

(770) 886-2500

Monday-Friday
8:30am-5:30pm EST

GENO'S GARAGE, INC.
1150 Samples Industrial Drive
Cumming, Georgia 30041

- 8) Once the heating element is removed, cut the wiring harness and thermostat from the retaining plate.
- 9) Now you have access to the plate and the pressed-in thermostat element. You may be able to pry it out of the filter top. Alternatively you may have to tap the thermostat out from the top.
- 10) With a small piece of sandpaper or steel wool, clean the bore of the wiring/thermostat hole.



- 11) Lubricate the thermostat hole and the fuel heater block-off with oil. From the bottom side, evenly press the fuel heater block-off into the thermostat hole. The fit is tight and you may have to place the top of the fuel filter top on a firm flat surface so you can tap the plug in from below with a hammer.
- 12) Reinstall the retaining plate and reinstall the 3 torx screws and tighten them.
- 13) Reinstall the fuel filter canister in reverse order from removal and prime the fuel system according to your service manual. (Bump the starter, release the key to "run" position, wait 20 seconds for your transfer pump to cycle off. Repeat two more times. Crank engine.)